

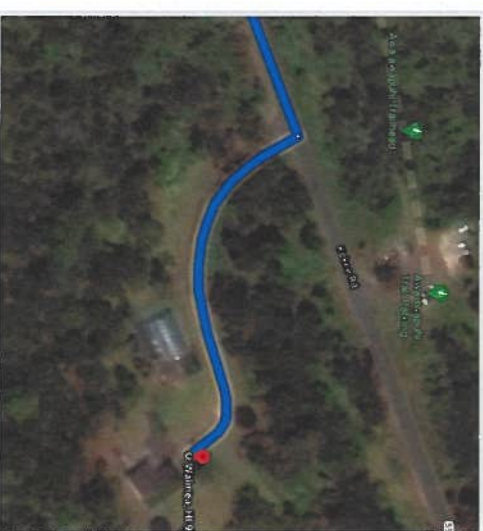
Cabin Use Contract

Date Keys Given



Verified By:
Kauai Mid-Elevation Nursery
KMEN CABIN

The Division of Forestry & Wildlife



User Name:

- Personal
 Work-Related

User Affiliation:

Dates Reserved:

Signature of User

Date Keys Returned:

Verified By:

List Any Task or Cleaning that you did:

List Any Problems or Issues You've Encountered:

Important Information

- Using the Cabin is a privilege. Leave the cabin in better condition than you found it!
- It is **IMPORTANT** to minimize your usage of water and **DO NOT DRINK WATER** for sanitary reasons.
- Bring your own cleaning supplies, paper goods, bedding and toiletries, but take them when you leave.
- Should there be an emergency (ie wildland fire), you may be asked to leave immediately.

Hazardous Issues:

Please **DO NOT DRINK WATER!!!**

DO NOT USE DECK! (Not Stable)

DIRECTIONS:

- Head NE on State Highway 550/ Waimea Canyon Drive.
- Take the first right onto a dirt/gravel road immediately after the 1.7-Mile Marker.

EMERGENCY CONTACT

Division of Forestry & Wildlife
3060 Eiwa Street, Room 306 Lihue,
HI 96766
808-274-3433

If Emergency/After Hours, Call
808-212-6615 or 808-729-0714

Cellphone Service is Available near
NASA site, Porters LZ & Canyon Rim
Lookouts

Contract brochure must be returned to office upon key drop off.
If you lose this contract, you will be asked to fill out another one.